



At the Intersection of State Standards & Project-Based Learning

Camino Nuevo High School

Hello!



○ Jeannemarie Dequiroz



○ Roberto Auchterlonie



○ Kenneth Chang



○ Michelle Lee



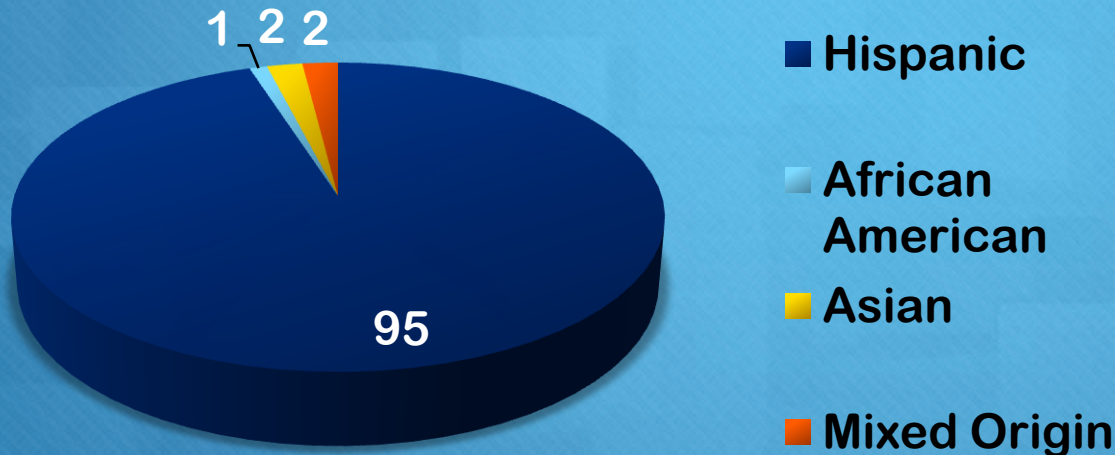
With a partner, discuss...

1. what Project-Based Learning looks like at your school or in your classroom.
2. how standards are aligned to your projects or curriculum in your classroom.

Camino Nuevo HS: A Brief History



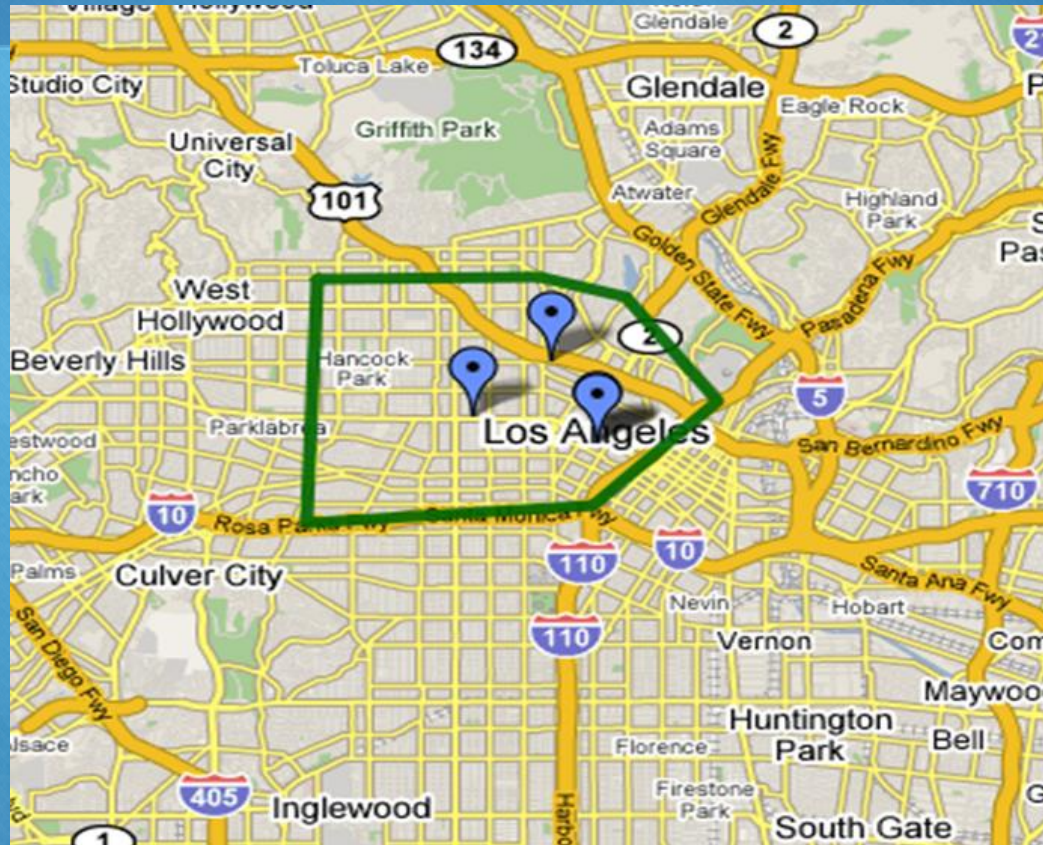
Demographics



Gang-Populated Community:

- MS-13
- 18th Street

Target Community





Statistics: Our School

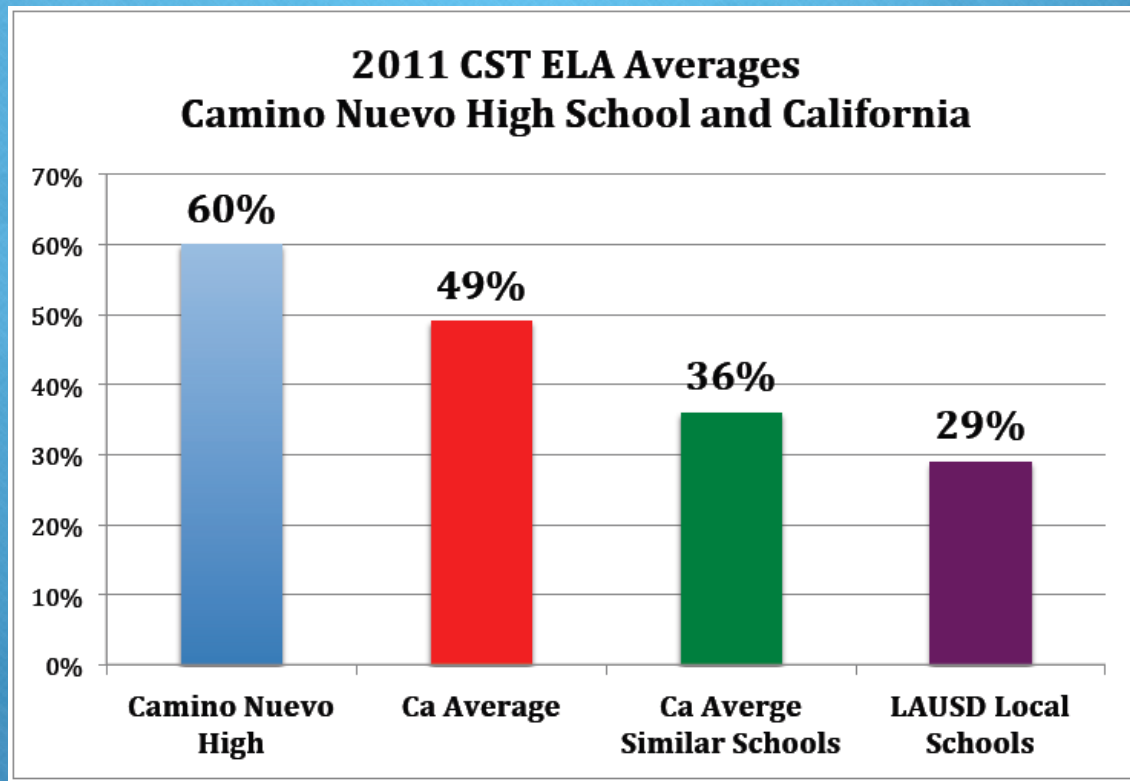
- **98% Free/Reduced Lunch**
- **57% of our parents did not graduate from HS and only 7% graduated from college.**
- **Undocumented AB540**



Statistics: Our Community

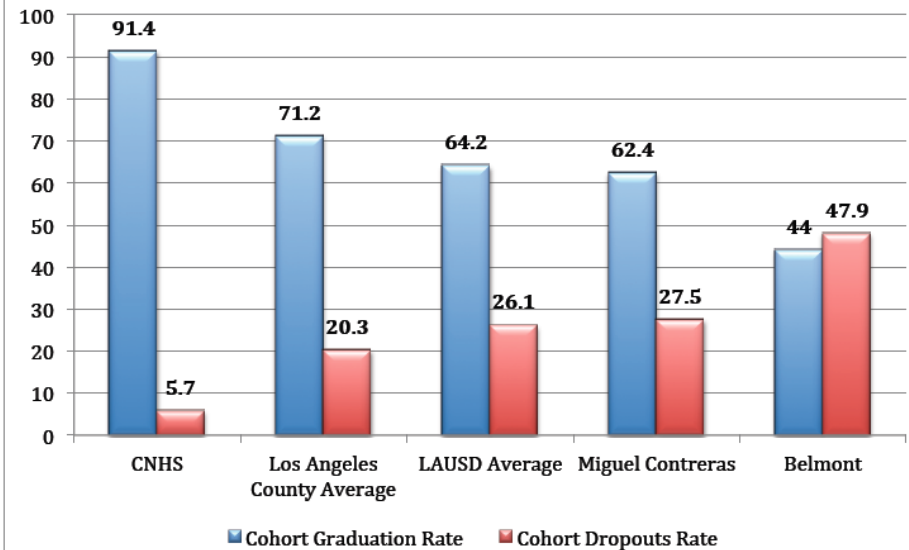
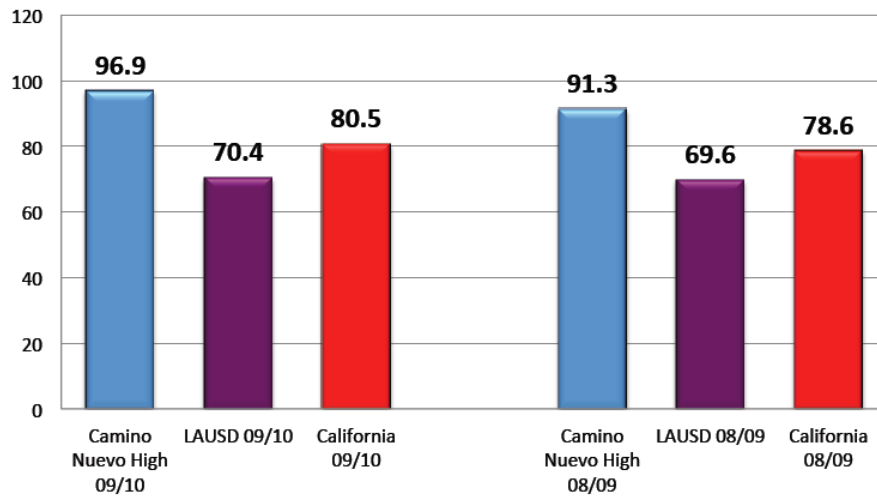
- **Greatest concentration of single parent households up to 88% (2x city average)**
- **Highest non-fluency in English--Up to 66% speak English not well or not at all.**
- **61% of residents are foreign-born**
- **Annual income is lowest in Los Angeles (Median income is \$11, 475)**

CST Averages



Graduation/Drop-Out Rates

Graduation Rate





With your partner,
discuss...

- how the demographics of your school and the community you serve inform your approach to project-based learning, if at all.



Project-Based Learning: What is it?

1. Standards-Based
2. The project process is the means to acquire content – not the end
3. Scaffolded Instruction



High Tech High's Six A's

1. **Academic Rigor:** Projects must be high-rigor
2. **Authenticity:** Uses real-world context
3. **Applied Learning:** Uses 21st century skills (i.e. teamwork, problem-solving, and communication)
4. **Active Exploration:** Connects to outside the classroom.
5. **Adult Connections:** Students connect with adults outside of school
6. **Assessment Practices:** High-stakes exhibitions